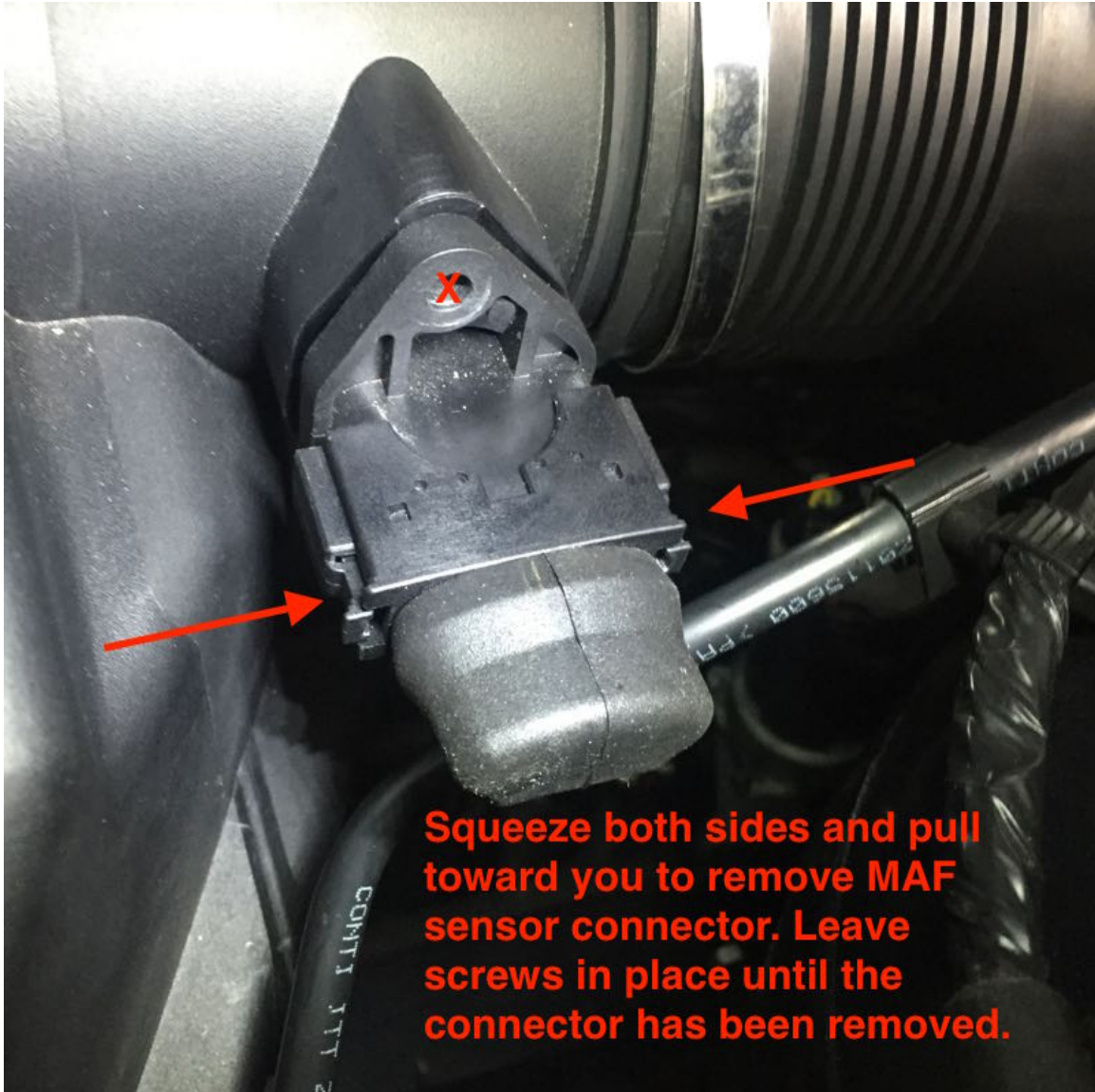


Z4M Gruppe-M Intake Installation

DISCLAIMER: This is not an official guide and may contain errors and omissions. Use of this guide is at your own risk.

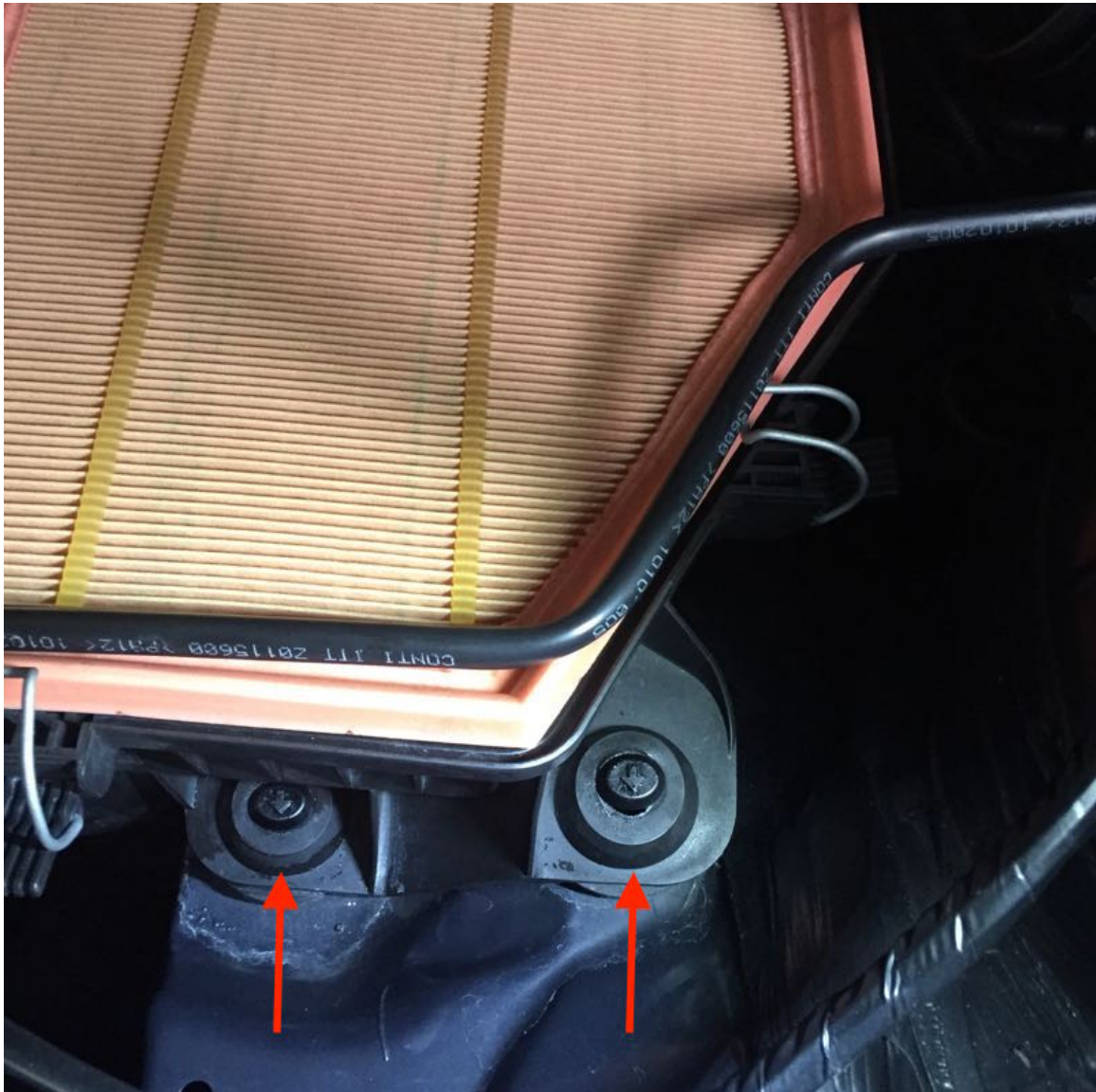
Remove the MAF sensor connector from the outlet of the OEM airbox.



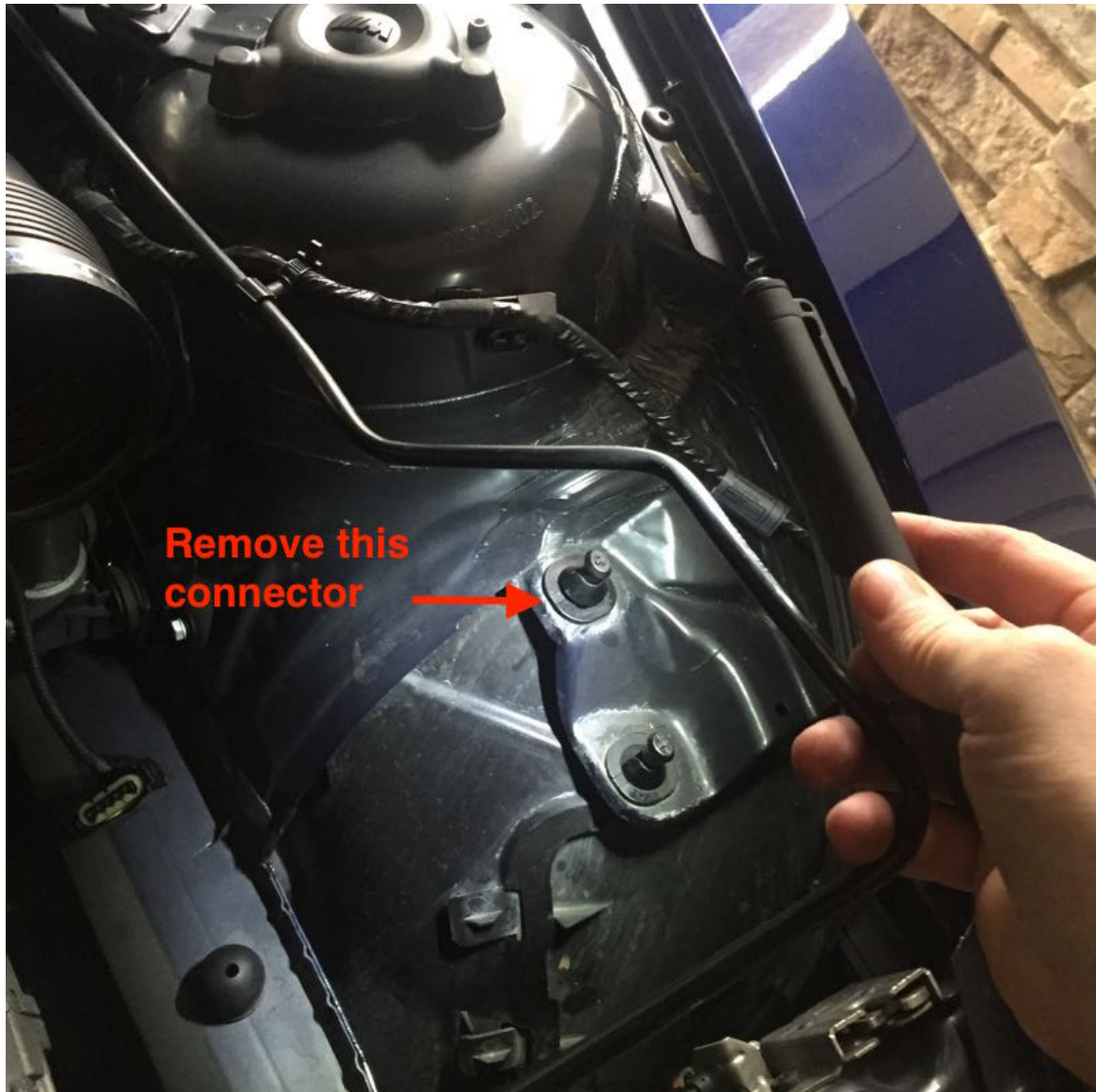
Loosen band clamps on the OEM intake tube. Unclip the top of the airbox and remove top from tube. It should wiggle free. After removal of airbox top, rotate the inlet tube down a few degrees.



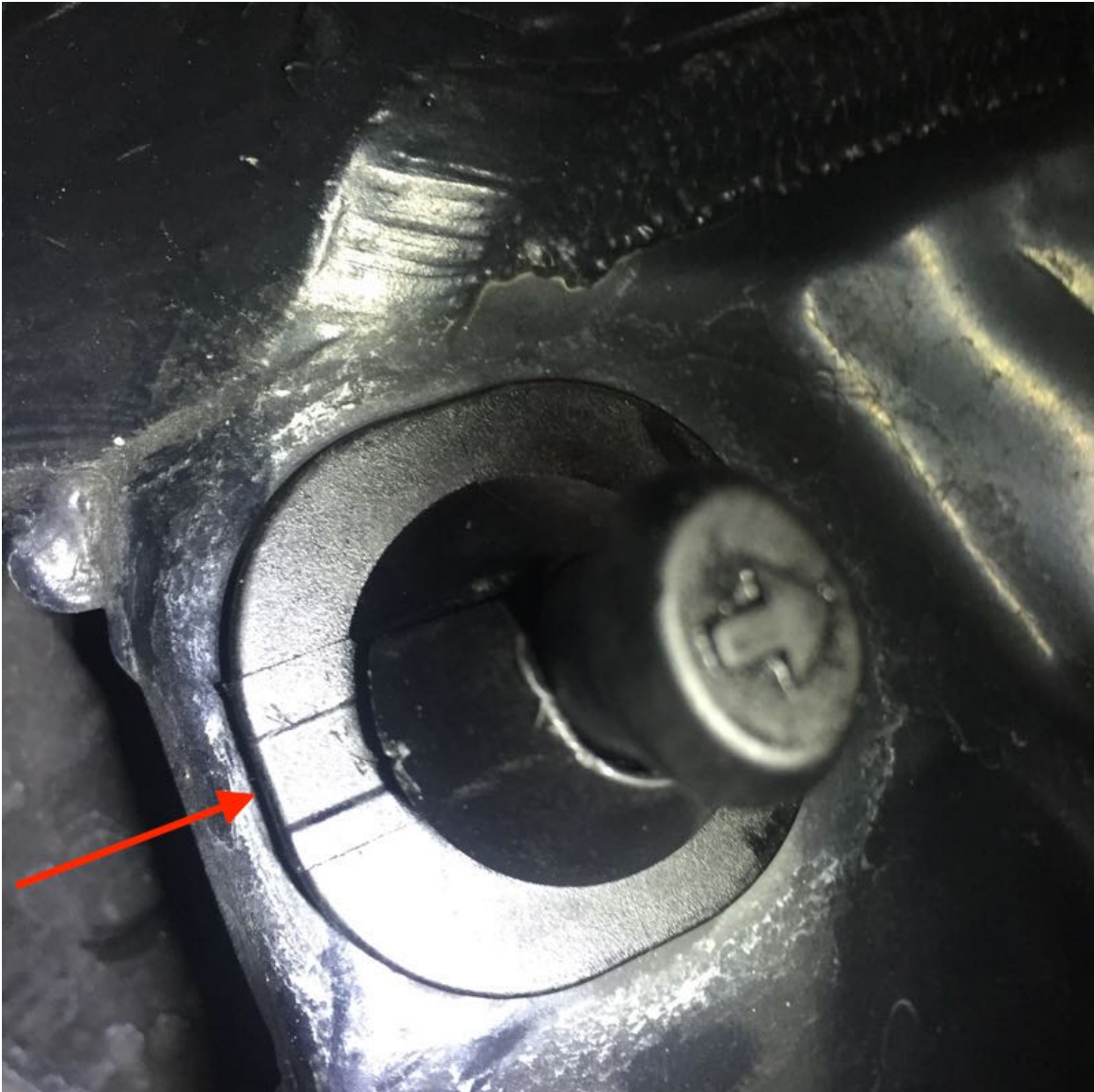
Remove the bottom of the airbox by pulling up. The airbox is held in place with friction on the rubber connectors. Just pull hard and slow. Nothing needs to be disconnected or unscrewed.



With airbox removed, you will now remove the upper connector to make room for the Gruppe-M intake support bracket.



Note the small slot on the connector base. Using a small flat blade screwdriver in this slot, pry up the connector.



After the connector is rotated 90 degrees, it may be removed.



Remove the two Torx screws from the MAF sensor and carefully remove and set aside.



Now, we will remove the woven metal mesh screen used to smooth airflow from the OEM airbox. First, remove the Torx screw on the outside of the box.



Next, pry around edges of the built-in filter in the top of the airbox to expose the inside.



Remove plastic tube and push out the wire mesh insert.



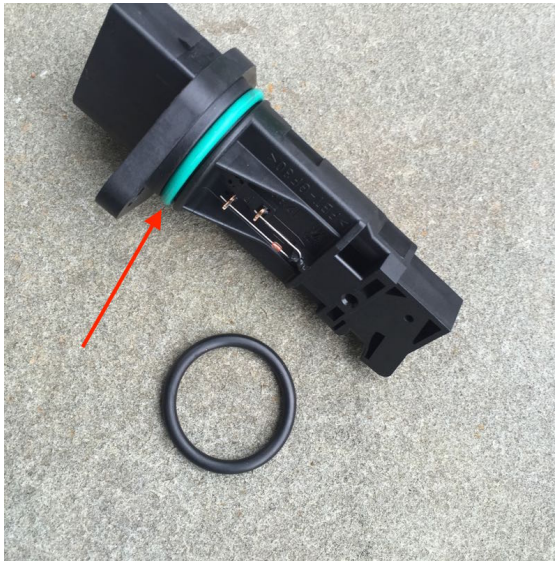
Use metal spacers aligned with the screw holes under the metal retaining ring to accommodate the sloped bottom of the metal mesh surround (bottom shown). Attach to metal inlet tube adapter with bolts B and C and nuts. Note that the longer C bolt is used to accommodate the support bracket.



Join the MAF tube to the metal inlet adapter with the silicon tube using the supplied band clamps. For aesthetics, you may wish to position any lettering on the silicon tube down and position band clamps so the smooth side will face up when installed.



Replace the existing green o-ring on the MAF sensor with the thicker o-ring supplied. It may require some extra force to fully seat the MAF sensor into the aluminum sensor spacer before screwing it into the MAF tube.

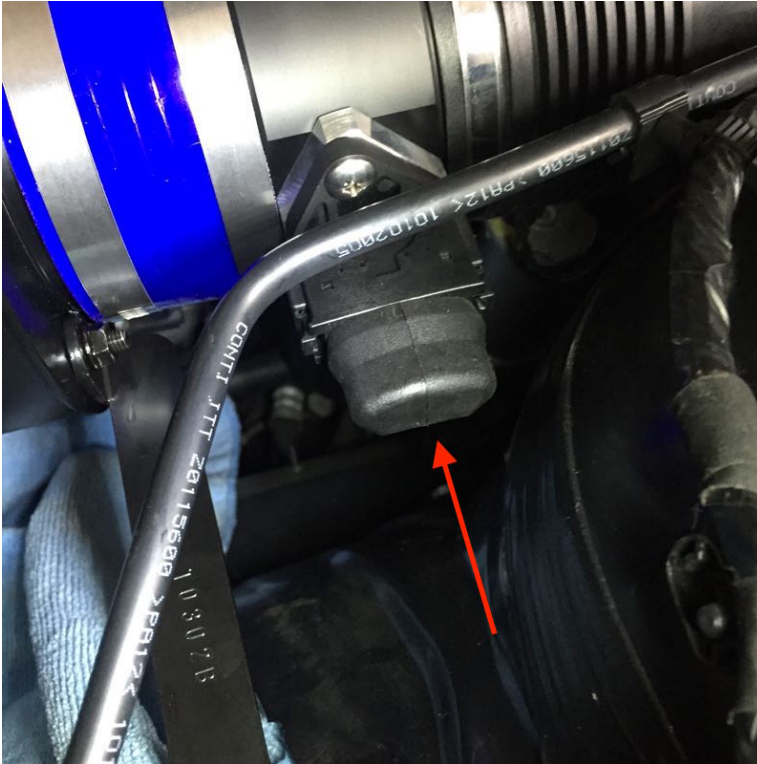


Attaching the support bracket requires holding a nut and washer under the small metal lip where the airbox was previously attached. This requires some finesse. A towel can be placed in this area to trap the nut and washer if they should fall. The bracket is held in place with bolt A. The carbon fiber intake is joined to the metal adapters by high quality band clamps. The intake should be placed roughly into position before mounting the support bracket.

This photo shows the bracket attached before the intake was mounted, and the intake would not fit. Don't repeat this mistake. Attach the intake loosely before connecting the support bracket.



Reattach the MAF sensor connector, adjust the intake position, and tighten band clamps around the intake using the supplied allen wrench. Tighten band clamps around OEM inlet tubes.



Enjoy the awesome sound of the Gruppe-M intake. ☺

